

A GLOBAL PROVIDER OF ENHANCED THERMAL CUTTING SOLUTIONS

EX-TRACK[®] MP-1

PORTABLE PLASMA CUTTING TRACTOR

EX-TRACK[®] MP-1 is a portable plasma cutting tractor designed for cutting strips, performing bevvels, or cutting circles with the flexibility to set a stable cutting speed and movement direction. These customizable settings help provide excellent cut quality. The machine includes two straight rails, each measuring 1.8 m in length. For longer cuts, additional rails can be ordered separately. The circle rail allows cutting circles of various diameters. Paired with our EX-TRAFIRE[®] plasma power supplies, you'll have a plug-and-play cutting solution for efficient and precise operations.



Steel plants



Structural



General fabrication

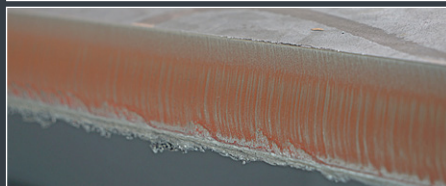
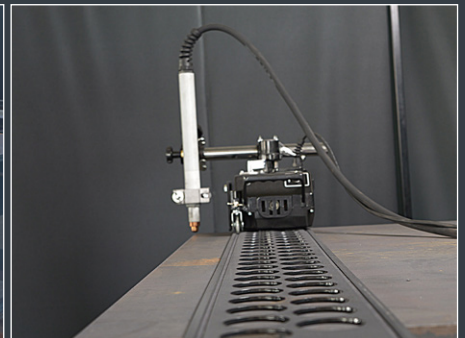


Training and education



Craft hobby and non industrial users

JUST MOUNT IT AND CUT IT!



EX-TRACK® MP-1 package content

- EX-TRACK® MP-1 device body
- Torch holder assembly
- Rack holder
- Horizontal gear rack
- Plasma torch holder adapter
- Tractors straight rail 1,8 m (2 pcs)
- Operator manual



EX-TRACK® MP-1 specifications

INPUT VOLTAGE 230V AC / 50 Hz

DIMENSIONS 440 × 205 × 125 mm

WEIGHT 9 kg

CUTTING SPEED 80-2 400 mm /min

POSSIBLE CUTTING THICKNESS 5-40 mm of Mild steel

BEVELING up to 45° (max. 30 mm thickness of M.S.)

MAX. TORCH DIAMETER 35 mm

POWER CORD 10 m

SCOPE OF DELIVERY EX-TRACK®MP-1 , 2 × straight rail 1,8 m, power cord, operator manual

Ordering info

Description	Quantity	Part. No.
EX-TRACK® MP1/240VAC/CE/straight cutter plasma	1	EX-0-704-004
EX-TRACK® tractors straight rail 1,8 m	1	EX-0-704-101
EX-TRACK® tractors circular rail	1	EX-0-704-102
EX-TRAFIRE® remote controller	1	EX-0-803-005
CNC Interface connection lead 6 m	1	EX-0-803-004